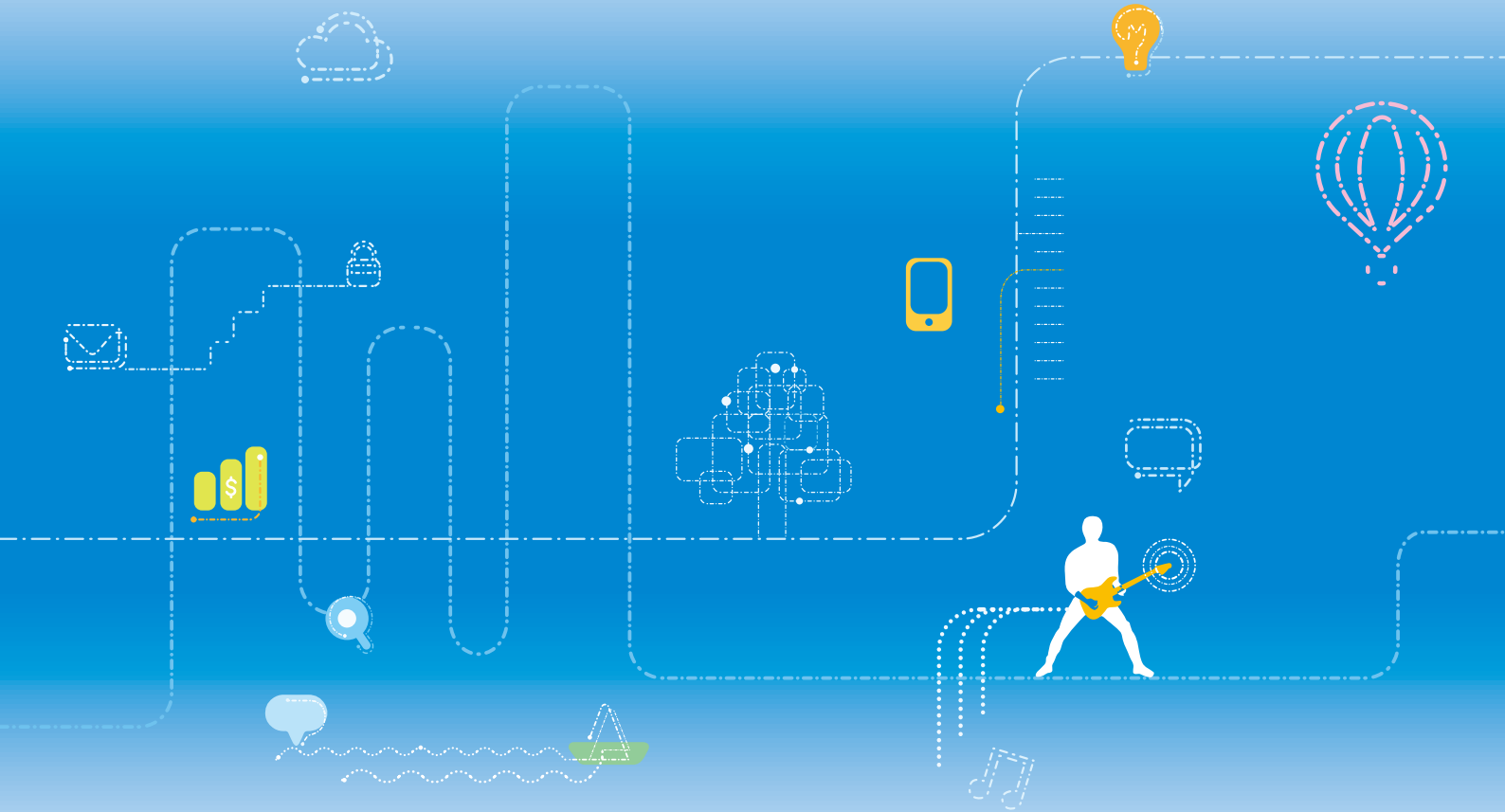


ZTE



ZTE Product Reference Guide For CEBIT



Tomorrow never waits



CONTENTS

SWITCHES	1
ROUTERS	17
WLAN	21
xPON	27
CPE	30
MULTIMEDIA CONFERENCING	37

ZXR10 1000 Series Intelligent Switch

Overview

ZXR10 1000 series intelligent switches are SMB access switches, which provide fast and convenient access to end users' terminals.

Key Features

- Green, low-carbon and eco-friendly design
- Neat and decent desktop/family equipment
- Supporting 100M and GE seamless connection and all wire-speed forwarding
- Plug and play
- Managed by easy-to-use web-based management tool

ZXR10 1150-5T



- 5 FE RJ45 ports
- Unmanaged switch

ZXR10 1150-8T



- 8 FE RJ45 ports
- Unmanaged switch

ZXR10 1150-8TI



- 8 FE RJ45 ports
- Unmanaged switch

ZXR10 1150-16T



- 16 FE RJ45 ports
- Unmanaged switch

ZXR10 1150-24T



- 24 FE RJ45 ports
- Unmanaged switch

ZXR10 1160-5T



- 5 GE RJ45 ports
- Unmanaged switch

ZXR10 1160-8T



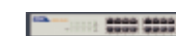
- 8 GE RJ45 ports
- Unmanaged switch

ZXR10 1160-8P



- 8 GE RJ45 ports, PoE+
- Unmanaged switch

ZXR10 1160-16T



- 16 GE RJ45 ports
- Unmanaged switch

ZXR10 1160-24T



- 24 GE RJ45 ports
- Unmanaged switch

ZXR10 1660-10TS



- 8 GE RJ45 ports
- 2 GE SFP ports
- Web-managed switch

ZXR10 1660-16TC



- 14 GE RJ45 ports
- 2 GE Combo ports
- Web-managed switch

ZXR10 1660-24TC



- 20 GE RJ45 ports
- 4 GE Combo ports
- Web-managed switch

ZXR10 1660-24PC



- 20 GE RJ45 ports, PoE+
- 4 GE Combo ports (4 PoE+)
- Web-managed switch

Specifications

Specifications	1150-5T	1150-8T	1150-8T1	1150-16T	1150-24T
FE Density	5 RJ45	8 RJ45	8 RJ45	16 RJ45	24 RJ45
Switching Capacity (Gbps)	1	1.6	1.6	3.2	4.8
Packet Forwarding Rate (Mpps)	0.74	1.19	1.19	2.38	3.57
MAC Address Table	1K	2K	2k	8K	8K
Power Consumption (100% load with PoE, W)	1.5	1.5	1.5W	1.48	2.63
Power Supply	100 ~ 240VAC/50Hz ~ 60Hz (Power adapter)		100V~240V, 50Hz~60Hz	100 ~ 240VAC/50Hz ~ 60Hz	
Heat Dissipation Pattern	Fanless design				
Environmental Parameter	Working temperature: 0°C - 40°C; Humidity: 10% ~ 90% (non-condensing)				
Dimensions (H x W x D, mm)	26 x 98 x 70	26.5 x 132 x 72	130 x 71 x 28	44 x 294 x 180	44 x 440 x 180
Max. Weight (kg)	0.17	0.23	0.202	1.3	1.8

Specifications	1160-5T	1160-8T	1160-8P	1160-16T	1160-24T
GE Density	5 RJ45	8 RJ45	8 RJ45	16 RJ45	24 RJ45
Switching Capacity (Gbps)	10	16	16	32	48
Packet Forwarding Rate (Mpps)	7.44	11.9	11.9	23.8	35.7
MAC Address Table	2K	8K	8K	8K	8K
Power Consumption (100% load with PoE, W)	3.3	5.6	140.1W(POE: 124W)	8.2	10.3
Power Supply	100 ~ 240VAC/50Hz ~ 60Hz (Power adapter)		100V~240V, 50Hz~60Hz	100 ~ 240VAC/50Hz ~ 60Hz	
Heat Dissipation Pattern	Fanless design				
Environmental Parameter	Working temperature: 0°C - 40°C; Humidity: 10% ~ 90% (non-condensing)				
Dimensions (H x W x D, mm)	31 x 142 x 108	28 x 165 x 102	294 x 180 x 44	44 x 294 x 180	44 x 440 x 180
Max. Weight (kg)	0.19	0.26	1.71	1.55	2.3

Specifications	1660-10TS	1660-16TC	1660-24TC	1660-24PC
GE Density	8 RJ45 + 2 SFP	14 RJ45 + 2 Combo	20 RJ45 + 4 Combo	20 RJ45 (PoE+) + 4 Combo (4 PoE+)
PoE	-	-	-	PoE+: 30W PoE: 15.4W
Switching Capacity (Gbps)	20	32	48	48
Packet Forwarding Rate (Mpps)	14.9	23.8	35.7	35.7
MAC Address Table	8K			
VLANs	4K			
Power Consumption (100% load with PoE, W)	10.7	14.7	23.3	401.3W (including system: 81.3W, PoE: 320W)
Power Supply	100 ~ 240 VAC/50Hz ~ 60Hz			
Heat Dissipation Pattern	Fanless design			
Environmental Parameter	Working temperature: 0°C - 40°C Humidity: 10% ~ 90% (non-condensing)			
Dimensions (H x W x D, mm)	44 x 294 x 180	44 x 440 x 220		44 x 440 x 330
Max. Weight (kg)	1.45	2.7	3	5.36

ZXR10 2900E Series Easy-maintenance Secure Switch

Overview

ZXR10 2900E series switches are superior L2 switches. With patent technology “easy-to-maintain”, the ZXR10 2900E series switches bring users ultimate efficiency and lower network maintenance costs.

Key Features

- Check device running status without login
- Plug and Play
- Smart VLAN
- Best choices for video bearing
- Smart Security: DAI, Bi-ACL and CPU protection
- 40nm chipset to save energy
- Graphical management interfaces
- PoE & PoE+ capability: 2910E-PS, 2918E-PS, 2928E-PS

ZXR10 2910E-PS



- 8 FE RJ45 ports, PoE+
- 2 GE Combo ports
- M-BUTTON
- Zero-touch configuration

ZXR10 2918E-PS



- 16 FE RJ45 ports, PoE+
- 2 GE Combo ports
- M-BUTTON
- Zero-touch configuration

ZXR10 2928E-PS



- 24 FE RJ45, PoE+
- 1 Expansion Card slot
- M-BUTTON
- Zero-touch configuration
- Power redundancy

ZXR10 2918E



- 16 FE RJ45 ports
- 2 GE Combo ports
- M-BUTTON
- Zero-touch configuration
- Fanless design

ZXR10 2928E



- 24 FE RJ45 ports
- 2 GE SFP ports, 2 GE Combo ports
- M-BUTTON
- Zero-touch configuration
- Fanless design

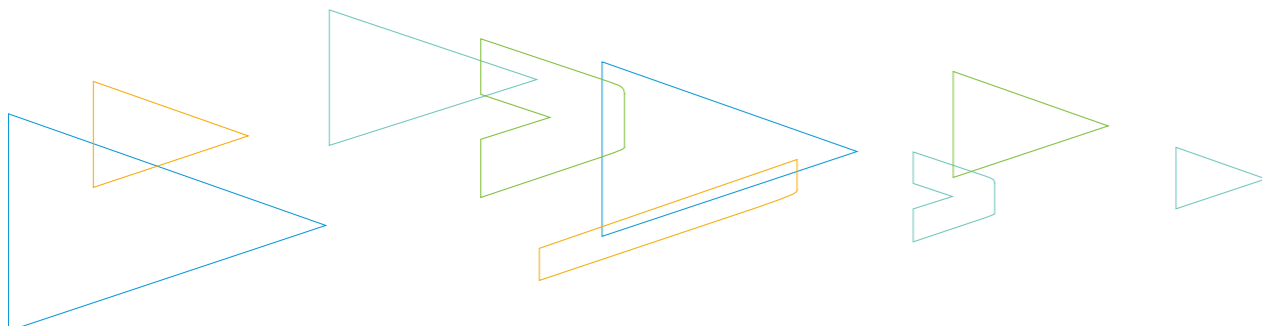
ZXR10 2952E



- 48 FE RJ45 ports
- 4 GE SFP ports
- M-BUTTON
- Zero-touch configuration
- Fanless design

Specifications

Specifications	2910E-PS	2918E	2918E-PS	2928E	2928E-PS	2952E
FE Density	8 RJ45 (PoE+)	16 RJ45	16 RJ45 (PoE+)	24 RJ45	24 RJ45 (PoE+)	48 RJ45
GE Density	2 Combo	2 Combo	2 Combo	2 SFP + 2 Combo	-	4 SFP
Expansion Slots	0	0	0	0	1	0
Expansion Card Supported	-	-	-	-	4 FE SFP ports 4 GE SFP ports 4 GE RJ45 ports	-
PoE	PoE+: 30W PoE: 15.4W	-	PoE+: 30W PoE: 15.4W	-	PoE+: 30W PoE: 15.4W	-
Switching Capacity (Gbps)	5.6	7.2	7.2	12.8	12.8	17.6
Packet Forwarding Rate (Mpps)	4.2	5.4	5.4	9.6	9.6	13.2
MAC Address Table	16K					
VLANs	4K					
Power Consumption (100% load with PoE, W)	306W (including system: 66W, PoE: 240W)	13	317W (including system: 70.6W, PoE: 246.4W)	17.1	831W (including system: 111W, PoE: 720W)	27.2
Power Supply	100 ~ 240 VAC/ 50Hz ~ 60Hz	100 ~ 240 VAC/ 50Hz ~ 60Hz or -48 VDC	100 ~ 240 VAC/ 50Hz ~ 60Hz	100 ~ 240 VAC/ 50Hz ~ 60Hz or -48 VDC	100 ~ 240 VAC/ 50Hz ~ 60Hz	100 ~ 240 VAC/ 50Hz ~ 60Hz or -48 VDC
Heat Dissipation Pattern	Fan cooling	Fanless design	Fan cooling	Fanless design	Fan cooling	Fanless design
Environmental Parameter	Working temperature: -5°C ~ +50°C Humidity: 10% ~ 90% (non-condensing)					
Dimensions (H x W x D, mm)	43.6 x 340 x 220	43.6 x 442 x 220	43.6 x 442 x 220	43.6 x 442 x 220	43.6 x 442 x 440	43.6 x 442 x 280
Max. Weight (kg)	3	2.8	3.8	3	6.4	3.4



ZXR10 5250 Series All Gigabit Intelligent Switch

Overview

ZXR10 5250 series are next-generation intelligent L2 Gigabit switches with powerful forwarding capability, flexible ACL, and rich monitoring capability.

Key Features

- GE access/ 10GE uplink interfaces
- Flexible expansion capability
- Abundant services including smart VLAN, improved Video Service experience, and bi-directional ACL
- PoE & PoE+ capability (5250-28PM/52PM&5250-28PM-H/52PM-H)
- Easy-to-maintain features with M-Button, Zero-touch configuration, Off-power alarms and Ethernet-OAM
- Green and energy-saving: 802.3az EEE, RoHS

ZXR10 5250-28TS-L



- 24 GE RJ45 ports
- 4 GE SFP ports
- M-BUTTON
- Zero-touch configuration

ZXR10 5250-52TS-L



- 48 GE RJ45 ports
- 4 GE SFP ports
- M-BUTTON
- Zero-touch configuration

ZXR10 5250-28SM



- 24 GE SFP ports
- 1 Expansion Card slot
- M-BUTTON
- Zero-touch configuration
- Power redundancy

ZXR10 5250-28TC



- 24 GE RJ45 ports
- 2 GE SFP ports, 2 GE Combo ports
- M-BUTTON
- Zero-touch configuration

ZXR10 5250-52TC



- 48 GE RJ45 ports
- 2 GE SFP ports, 2 GE Combo ports
- M-BUTTON
- Zero-touch configuration

ZXR10 5250-28PM



- 20 GE RJ45 ports, PoE+
- 4 GE Combo ports (4 PoE+)
- 1 Expansion Card slot
- M-BUTTON
- Zero-touch configuration
- Power redundancy

ZXR10 5250-52PM



- 48 GE RJ45 ports, PoE+
- 1 Expansion Card slot
- M-BUTTON
- Zero-touch configuration
- Power redundancy

ZXR10 5250-52TC-H



- 48 GE RJ45 ports
- 2 GE SFP ports, 2 GE Combo ports
- M-BUTTON
- Zero-touch configuration

ZXR10 5250-52TM-H



- 48 GE RJ45 ports
- 1 Expansion Card slot
- M-BUTTON
- Zero-touch configuration
- Power redundancy

ZXR10 5250-52PM-H



- 48 GE RJ45 ports
- 1 Expansion Card slot
- M-BUTTON
- Zero-configuration
- Power redundancy

ZXR10 5250-28TC-H



- 24 GE RJ45 ports
- 2 GE SFP ports, 2 GE Combo ports
- M-BUTTON
- Zero-touch configuration

ZXR10 5250-28TM-H

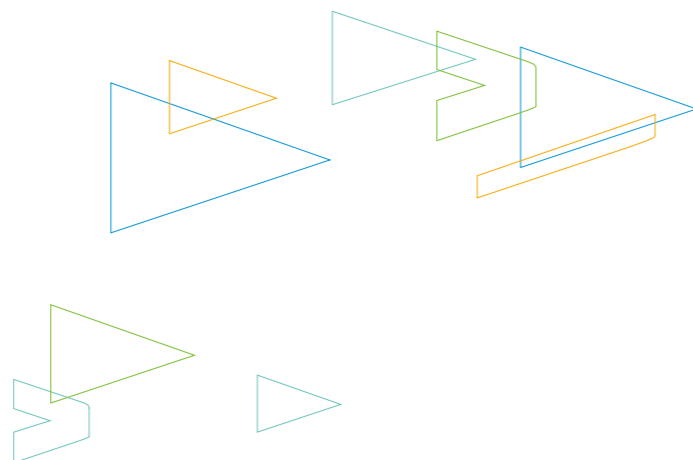


- 20 GE RJ45 ports
- 4 GE Combo ports
- 1 Expansion Card slot
- M-BUTTON
- Zero-touch configuration
- Power redundancy

ZXR10 5250-28PM-H



- 20 GE RJ45 ports, PoE+
- 4 GE Combo ports (4 PoE+)
- 1 Expansion Card slot
- M-BUTTON
- Zero-touch configuration
- Power redundancy

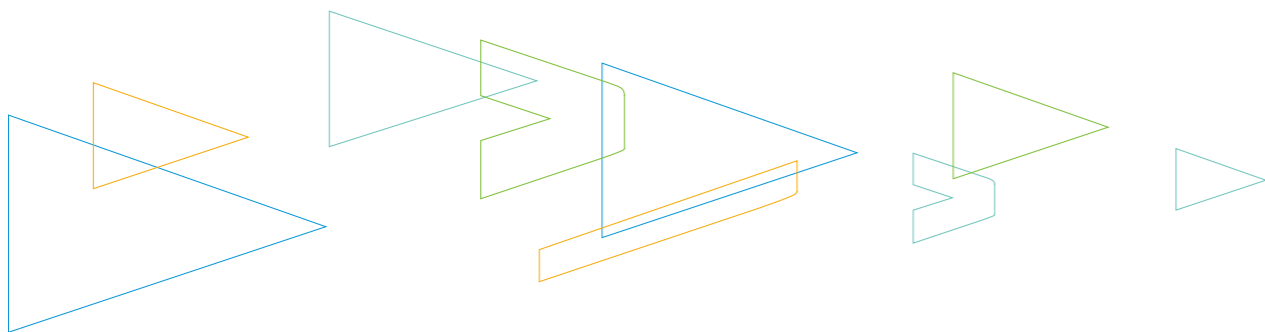


Specifications

Specifications	ZXR10 5250-28TS-L	ZXR10 5250-52TS-L	ZXR10 5250-28TC	ZXR10 5250-52TC
GE Density	24 RJ45 + 4 SFP	48 RJ45 + 4 SFP	24 RJ45 + 2 SFP + 2 Combo	48 RJ45 + 2 SFP + 2 Combo
Expansion Slots	0	0	0	0
Expansion Card Supported	-	-	-	-
PoE	-	-	-	-
Switching Capacity (Gbps)	56	104	56	104
Packet Forwarding Rate (Mpps)	42	78	42	78
MAC Address Table	16K			
VLANs	4K			
Power Consumption (100% load with PoE, W)	26	52	27	53
Power Supply	100 ~240 VAC/50Hz ~ 60Hz		100 ~240 VAC/50Hz ~ 60Hz or -48 VDC	
Heat Dissipation Pattern	Fan Cooling (the rotating speed of the fan can be adjusted according to the internal temperature of equipment)			
Environmental Parameter	Working temperature: -5°C ~ +50°C Humidity: 20% ~ 90% (non-condensing)			
Dimensions (H x W x D, mm)	43.6 x 442 x 220	43.6 x 442 x 220	43.6 x 442 x 220	43.6 x 442 x 220
Max. Weight (kg)	2.9	3	2.9	3

Specifications	ZXR10 5250-28SM	ZXR10 5250-28PM	ZXR10 5250-52PM	ZXR10 5250-28TC-H
GE Density	24 SFP	20 RJ45 (PoE+) + 4 Combo (4 PoE+)	48 RJ45 (PoE+)	24 RJ45 + 2 SFP + 2 Combo
Expansion Slots	1	1	1	0
Expansion Card Supported	4 GE SFP 4 GE RJ45	4 GE SFP 4 GE RJ45 4 10GE SFP+		-
PoE	-	PoE+: 30W PoE: 15.4W	PoE+: 30W PoE: 15.4W	-
Switching Capacity (Gbps)	56	128	176	56
Packet Forwarding Rate (Mpps)	42	96	132	42
MAC Address Table	16K			
VLANs	4K			
Power Consumption (100% load with PoE, W)	39	831W (including system: 111W, PoE: 720W)	1020W (including system: 180W, PoE: 840W)	27
Power Supply	100 ~240 VAC/50Hz ~ 60Hz or -48 VDC	100 ~240 VAC/50Hz ~ 60Hz	100 ~240 VAC/50Hz ~ 60Hz	100 ~240 VAC/50Hz ~ 60Hz or -48 VDC
Heat Dissipation Pattern	Fan Cooling (the rotating speed of the fan can be adjusted according to the internal temperature of equipment)			
Environmental Parameter	Working temperature: -5°C ~ +50°C Humidity: 20% ~ 90% (non-condensing)			
Dimensions (H x W x D, mm)	43.6 x 442 x 220	43.6 x 442 x 440	43.6 x 442 x 440	43.6 x 442 x 220

Specifications	ZXR10 5250-52TC-H	ZXR10 5250-28TM-H	ZXR10 5250-52TM-H	ZXR10 5250-28PM-H	ZXR10 5250-52PM-H
GE Density	48 RJ45 + 2 SFP +2 Combo	20 RJ45 + 4 Combo	48 RJ45	20 RJ45 (PoE+) + 4 Combo (4 PoE+)	48 RJ45 (PoE+)
Expansion Slots	0	1	1	1	1
Expansion Card Supported	-	-	-	4 GE SFP 4 GE RJ45 4 10GE SFP+	-
PoE	-	-	-	PoE+: 30W PoE: 15.4W	PoE+: 30W PoE: 15.4W
Switching Capacity (Gbps)	104	128	128	176	176
Packet Forwarding Rate (Mpps)	78	96	132	96	132
MAC Address Table	16K				
VLANs	4K				
Power Consumption (100% load with PoE, W)	53	51	70	831W (including system: 111W, PoE: 720W)	1020W (including system: 180W, PoE: 840W)
Power Supply	100 ~240 VAC/50Hz ~ 60Hz or -48 VDC			100 ~240 VAC/50Hz ~ 60Hz	
Heat Dissipation Pattern	Fan Cooling (the rotating speed of the fan can be adjusted according to the internal temperature of equipment)				
Environmental Parameter	Working temperature: -5°C ~ +50°C Humidity: 20% ~ 90% (non-condensing)				
Dimensions (H x W x D, mm)	43.6 x 442 x 220	43.6 x 442 x 440	43.6 x 442 x 440	43.6 x 442 x 440	43.6 x 442 x 440
Max. Weight (kg)	3	6.4	6.4	7.5	7.5



ZXR10 5950-H Series L3 All Gigabit Intelligent Routing Switch

Overview

5950-H series switches provide high-density Gigabit access interfaces and 10Gigabit uplink interfaces, comprehensive L2 switching and L3 routing capabilities, and abundant security and reliability related features.

Key Features

- Supports Virtual Switch Clustering (VSC)
- Support POE and POE+, Each POE interface can provide 30 watt POE power output, some interfaces can provide dual channel maximally 60 watt POE power output
- Innovative M-Button function

ZXR10 5950-36TM-H



- 24 GE RJ45 ports
- 4 GE Combo ports
- 2 Expansion Card slots (10GE, GE, 40G for Stacking Card)
- Support VSC

ZXR10 5950-36PM-H



- 24 GE RJ45 ports, PoE+
- 4 GE Combo ports (4 PoE+)
- 2 Expansion Card slots (10GE, GE, 40G for Stacking Card)
- Support VSC

ZXR10 5950-56TM-H



- 48 GE RJ45 ports
- 2 Expansion Card slots (10GE, GE, 40G for Stacking Card)
- Support VSC

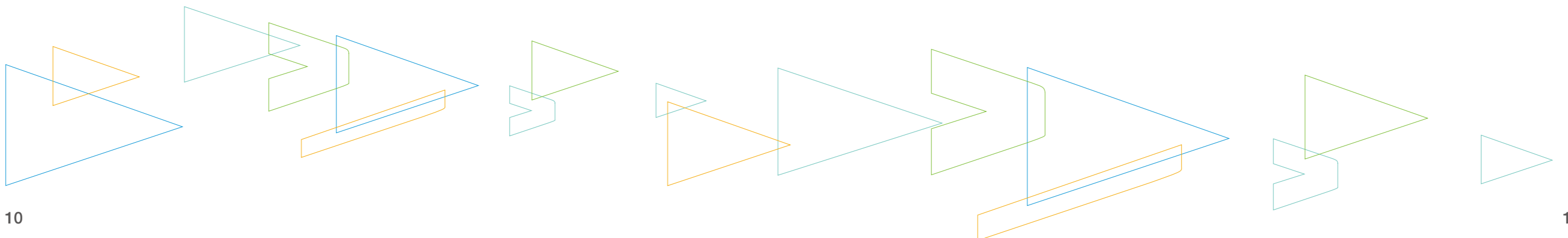
ZXR10 5950-56PM-H



- 48 GE RJ45 ports, PoE+
- 2 Expansion Card slots (10GE, GE, 40G for Stacking Card)
- Support VSC

Specifications

Specifications	5950-36TM-H	5950-56TM-H	5950-36PM-H	5950-56PM-H
GE Density	24 GE RJ45+4 GE Combo	48 GE RJ45	24 GE RJ45+4 GE Combo	48 GE RJ45
Extension Slots	2	2	2	2
Extension Card Supported	4 10GE-SFP+ 4 GE-SFP 4 GE RJ45 2*40G mini SAS Stacking Card(rear expansion slot only)			
PoE	-		PoE+: 30W/60W PoE: 15.4W	PoE+: 30W/60W PoE: 15.4W
Switching Capacity (Gbps)	296	336	296	336
Packet Forwarding Rate (Mpps)	222	252	222	252
Stacking Supported	Support stacking			
MAC Address Table	128K			
VLANs	4K			
Route Table	16K/8K(IPv4/IPv6)+12K/6K(IPv4/IPv6) (Host Route Number +Subnet Route Number)			
Power Consumption (100% load with PoE)	87W	92w	929w(POE power output 840W, system power consumption 89W)	1036w(POE power output 940W, system power consumption 96W)
Power Supply	AC:100V~240V,50Hz~60Hz DC: -38V~57V	AC:100V~240V,50Hz~60Hz DC: -38V~57V	AC:100V~240V,50Hz~60Hz	AC:100V~240V,50Hz~60Hz
Heat Dissipation Pattern	Fan cooling			
Environmental Parameter	Working temperature: -5 to +45°C Humidity:10% to 90% (non-condensing)			
Dimensions (H x W x D)	44mm*442mm*440mm	44mm*442mm*440mm	44mm*442mm*440mm	44mm*442mm*440mm
Max. Weight	8.3kg	8.4kg	9kg	9.2kg



ZXR10 5960 Series L3 10 Gigabit Routing Switch

Overview

ZXR10 5960 series are cassette L3 10G MPLS routing switches that deliver ultra switching capacity, carrier-class reliability and superior scalability. The switches can be used in data center TOR and 10Gigabit aggregation campus solutions in space-constrained environments.

Key Features

- High port density: up to 48 10G and four 40G interfaces
- Flexible configuration of 40G QSFP+ uplink interface: can be configured as four 10G uplink interfaces
- Full Service support: Port-based VLAN, Subnet VLAN, Protocol-based VLAN, Selective QinQ, VLAN translation, Voice VLAN, MVR, MPLS L2/L3 VPN and MCE
- Full Data Center features: IEEE802.1Qbg, EVB, VDP, EDCP, CDCP, DCTCP, PFC, QCN, ETS and DCBX
- Industrial-class reliability and security: CPU DDOS, DAI, ZESR and MC-LAG
- Easy-to-maintain features: M-Button, zero-touch configuration and ALS
- Green and energy-saving

ZXR10 5960-32DL



- 24 10GE SFP+ ports
- 2 40GE QSFP+ ports
- M-BUTTON
- Zero-touch configuration
- DCBX/QCN/PFC/ETS
- Power redundancy

ZXR10 5960-64DL



- 48 10GE SFP+ ports
- 4 40GE QSFP+ ports
- M-BUTTON
- Zero-touch configuration
- DCBX/QCN/PFC/ETS
- Power redundancy

Specifications

Specifications	5960-32DL	5960-64DL
10 GE Density	24 SFP+	48 SFP+
40 GE Density	2 QSFP+	4 QSFP+
Switching Capacity (Gbps)	640	1280
Packet Forwarding Rate (Mpps)	480	960
MAC Address Table	128K	
VLANs	4K	
Route Table	16K host routes + 16K subnet routes	
Power Consumption (100% load with PoE, W)	265	345
Power Supply	100 ~240 VAC/50Hz ~ 60Hz or -48 VDC	
Heat Dissipation Pattern	Fan cooling (Front-to-Rear/Rear-to-Front air flow)	
Environmental Parameter	Working temperature: -5°C ~ +45°C Humidity: 20% ~ 90% (non-condensing)	
Dimensions (H x W x D, mm)	43.6 x 442 x 440	
Max. Weight (kg)	7.6	8

ZXR10 BigMatrix™ 9900 Series Data Center Switches

Overview

BigMatrix™ 9900 Series Data Center Switches are ZTE's new generation of large-capacity, high-performance, highly reliable core switches oriented to data center and campus. With industry's largest switching capacity, highest-density 10GE/40GE/100GE interfaces, the capability to evolve to SDN and perfect support of data center features, 9900 helps customers to build large-scale data center networks which is highly flexible, evolvable and cloud computing virtualization oriented.

Key Features

- The industry's largest-capacity data center switch
- Advanced and reliable hardware architecture
- Enhanced VSC2.0 technology
- Rich data center features
- Industrial-grade reliability
- Evolution to SDN
- Green Energy saving



9904



9908



9912

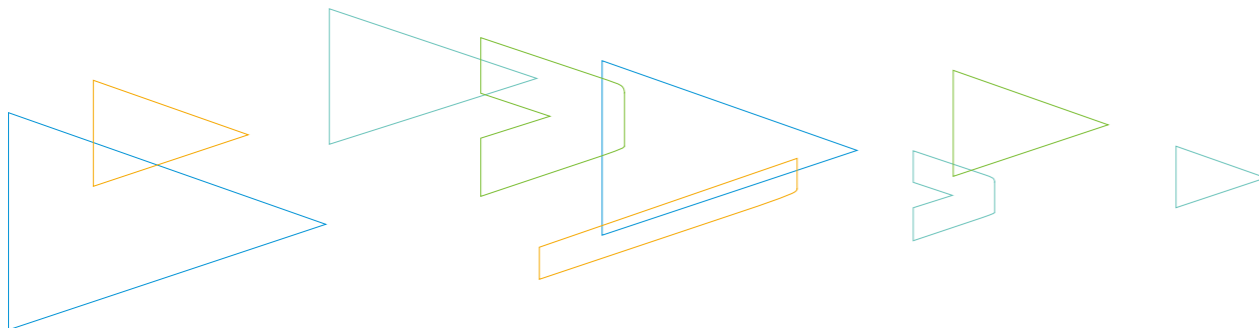


Specifications

Specification	9912	9908	9904
Switching capacity (bps)	63.4T/153.6T	42.2T/102.4T	21.1T/51.2T
Packet forwarding rate (pps)	25920M	17280M	8640M
Service slot number	12	8	4
Switching board redundancy	7+1	7+1	7+1
100GE interface number	144	96	48
40GE interface number	432	288	144
10GE interface number	576	384	192
10GE interface number (with 40GE/100GE interface extension)	1728	1152	576
Interface Card	48 ports GE SFP optical interface card		
	40 ports 10GE SFP+ optical interface card		
	48 ports 10GE SFP+ optical interface card		
	12 ports 40GE QSFP+ optical interface card		
	36 ports 40GE QSFP+ optical interface card		
	12 ports 100GE CXP optical interface card		
Data Center Features	Support TRILL		
	Support DCB		
	Support 802.1Qbg		
	Support VSC 2.0 (Virtual Switching Cluster)		
	Support CLOS architecture		
	Support VOQ		
	Support over 100ms buffer		
	Support strict front-to-rear ventilation channel		
	Support data center resource management software		
	Support XML interface		
Ethernet Ring Protection	Support STP, RSTP, MSTP		
	Support ZESR/ZESR+ Ethernet Ring protection protocol		
VLAN	Support 4K VLAN		
	Support VLAN translation		
	Support PVLAN		
	Support QinQ		
	Support selective QinQ		
	Support SuperVLAN		
Link Protection	Support ZESS(ZTE Ethernet smart switch)		
	Support BFD		
	Support VRRP		

Specification	9912	9908	9904
IP routing	Support static routing, static routing for IPv6		
	Support RIPv1/v2, RIPng		
	Support OSPFv2/v3		
	Support ISIS, ISISv6		
	Support BGP4, BGP4+ For IPv6		
	Support ECMP		
IPv6 Features	Support IPv6 Ping, IPv6 Telnet		
	Support ND(Neighbor Discovery)		
	Support MLD Snooping		
	Support DHCPv6 snooping		
	Support IPv6 ACL		
	Support IPv4/IPv6 dual-stack		
Multicast Features	Support 6to4 tunnel		
	Support ISATAP tunnel		
	Support IGMP V1/V2/V3		
	Support IGMP snooping, filtering, proxy and fast leave		
	Support controllable multicast and CAC channel access control		
	Support MVR(multicast VLAN register)		
QoS/ACL	Support VLAN/group-based user number limit		
	Support PIM-SM, PIM-DM		
	Support MSDP		
	Support bandwidth management based on port/flow		
	Support priority marking, remarking and mapping based on 802.1p and IP DSCP		
	Support SP, WRR and SP+WRR queue dispatching mechanism		
Security Features	Support WRED, tail drop and other congestion avoidance mechanisms		
	Support standard ACL,MAC-based ACL, L2 ACL, extended ACL, mixed ACL, self-defined ACL and VLAN ACL		
	Support time-range ACL configuration		
	Support hierarchical user management and password protection		
	Support CPU anti-attack and CPU overload protection		
	Support broadcast, multicast and unknown unicast message suppression		
Security Features	Support port isolation		
	Support DAI(dynamic ARP Inspection)		
	Support 802.1x, Guest VLAN and Radius authentication		
	Support STP Root Guard and BPDU attack protection		
	Support IP Source Guard		
	Support uRPF unicast reverse routing check		
Security Features	Support RIP/OSPF/BGP MD5 encryption checking		

Specification	9912	9908	9904
Equipment management	Support RS232 Console (RJ45)		
	Support out-band Ethernet management interface		
	Support CLI/Telnet/SSH-based equipment management		
	Support FTP and TFTP		
	Support local and remote (Radius/Tacacs+) user login authentication and authorization		
	Support SNMPv1/v2/v3		
	Support DHCP Client		
	Support NetNumen U31		
	Support EasyManager zero deployment and batch inspection tool		
	Support cluster management (ZGMP)		
	Support NTP		
	Support SFLOW		
	Support power-off alarm		
Height	25U	21U	14U
Dimensions(H*W*D)	1108.4 mm*445mm*819 mm	930.6 mm*445mm*819 mm	619.5 mm*445mm*819 mm
Maximum weight	354kg	269kg	178.5kg
DC power supply	-48V		
AC power supply	100V~240V,50Hz~60Hz		
HVDC power supply	192V-400V		
Maximum power consumption	10510W	8000W	4500W
Power redundancy pattern	AC: 2 partitions and 3+3 each partition	AC: 4+4,	AC: 2+2,
	DC: 6 partition and 1+1 each partition	DC: 4 partition and 1+1 each partition	DC: 2 partition and 1+1 each partition
Cooling	Forced air cooling	Forced air cooling	Forced air cooling
Ambient temperature and humidity	Temperature: -5°C~+45°C, Humidity:5%~95% (non-condensing)		
Operating altitude	<5000m		
MTBF	32.4 years/284172 hours	34.6 years /303169 hours	48.7 years /426885 hours
MTTR	< 30 minutes		



ZXR10 ZSR V2– Next generation access router

Overview

ZXR10 ZSR V2 series are intelligent multi-service routers, which provide users with an integrated communication platform. The ZXR10 ZSR V2 series helps government, enterprise and industrial customers to build up their access networks.

Key Features

- Multi-core CPU, up to 5Mpps processing capacity
- An integration of routers, switches, firewalls and APs
- BYOD, plug and play
- 3G/LTE access
- Traffic-aware dynamic load balancing
- IPv6 ready, Dual-stack, tunnel and translation
- USB Configuration and Deployment, Batch Software Upgrade
- WEB GUI NMS

ZXR10 1800-2S



- 4 slots
- 2 GE Combo + 4 GE RJ45 or 4 GE Combo + 2 GE RJ45

ZXR10 2800-4



- 4 slots
- 2 GE Combo + 4 GE RJ45 or 4 GE Combo + 2 GE RJ45
- Support power redundancy

ZXR10 3800-8



- 8 slots
- 2 GE Combo + 4 GE RJ45 or 4 GE Combo + 2 GE RJ45
- Support power redundancy

Specifications

Specifications	1800-2S	2800-4	3800-8
MPPU slots	0	1	1
SPIU slots	2	2	4
PIU slots	0	2	4
DPIU slots	0	1	2
Main Processor Forwarding Unit (MPFU)	0	RAC-2838-MPFU-A RAC-2838-MPFU-B RAC-2838-MPFU-C	RAC-2838-MPFU-A RAC-2838-MPFU-B RAC-2838-MPFU-C
Forwarding Rate	1Mpps	1.5Mpps~ 5Mpps	
Memory	2GB	2 GB	2 GB
Flash	1GB	4 GB	4 GB
Fixed Ports	GE	2 Combo + 4 RJ45	2 Combo + 4 RJ45 (MPFU-A) 4 Combo + 2 RJ45 (MPFU-B/C)
	3G/LTE	No	No
	WIFI	No	No
	USB2.0	2	2
Flexible Ports	Ethernet	FE/GE	FE/GE/10GE
	POS	No	OC-3/STM-1 OC-12/STM-4
	CPOS	No	OC-3/STM-1
	xDSL	No	ADSL/ADSL2/ADSL2+/VDSL/VDSL2 G.SHDSL
	TDM	E1/CE1	E1/CE1/CES
	Serial port	V.35/ V.24	V.35/ V.24
	3G/LTE	No	3G/LTE
Power Redundancy	No	Support 1+1, or AC and DC hybrid	Support 1+1, or AC and DC hybrid
Power Supply	100 to 240 VAC or -72 to -38 VDC		
Rated Power	60W	250 W	250 W
Chassis Height	1RU	2 RU	3 RU
Dimensions (H x W x D)	43.6 x 380 x 200 mm	88.1 x 442 x 200 mm	132 x 442 x 200 mm

ZXR10 ZSR Series Intelligent Integrated Multi-Service Router

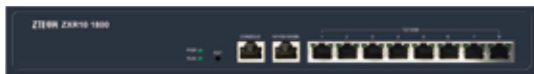
Overview

ZXR10 ZSR series are intelligent integrated multi-service routers, which provide users with an integrated communications platform. The ZXR10 ZSR helps government, enterprise or industrial customers to build up their access networks.

Key Features

- Perfect integration of routing and switching
- Traffic-aware Smart Switchover
- Embedded hardware encryption accelerated engine
- Flexible VPN Solutions
- Smart security features
- WEB GUI

ZXR10 1809



- 8FE+1GE
- AC, no power redundancy

Specifications

Specifications	ZXR10 ZSR1809
Fixed ports	1 Console 1*10/100/1000M + 8*10/100M
slots	0
Forwarding performance	150kpps
Dimensions(H x W x D, mm)	44.0x360.0x 287.0
Rated Power	25W
Power supply	AC: 100V~240V, 50Hz~60Hz

ZXR10 6800 Series Aggregation Service Router

Overview

ZXR10 6800 series are intelligent multi-service routers that integrated routing, switching, wireless and security features altogether. With rich interface types and flexible multi-service access capability, the ZXR10 6800 routers are the optimal choices for the MANs, IP RANs, DCNs and government & enterprise networks.

Key Features

- Compact structure, 200mm deep
- Dual control and forwarding units
- 40Gbps high-speed forwarding capability
- HQoS and MPLS-to-Edge deployment
- 300k to 10Gbps and wire to wireless interfaces
- An integration of routers, switches, firewalls, NAT/VPN GW and BRAS
- Dual-stack, tunnel and translation
- Zero-touch and automatic configuration

ZXR10 6802



- 2 slots
- 2GE RJ45 + 2GE SFP

ZXR10 6804



- 4 slots
- Support MPFU and power redundancy

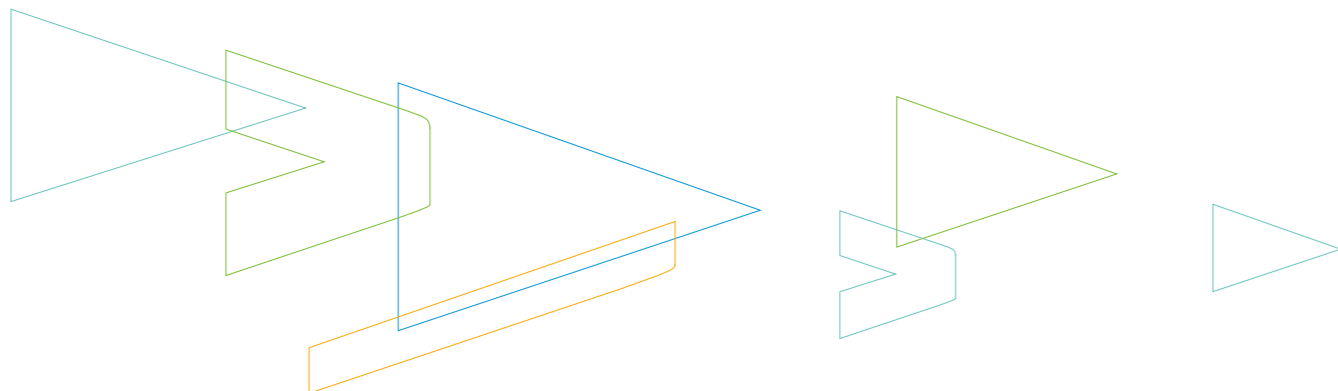
ZXR10 6812



- 12 slots
- Support MPFU and power redundancy

Specifications

		6802	6804	6812
2 (support 3G/LTE dongle)				
MPFU slots		1	2 (1:1 redundancy)	2 (1:1 redundancy)
PIU slots		2	4	12
DPIU slots		0	2	6
OSU slots		0	1	1
Main Processor Forwarding Unit (MPFU)		RA-MPFU-02-A1	RA-MPFU-04-A1 RA-MPFU-04-B0 RA-MPFU-04-B1 RA-MPFU-04-HS1	RA-MPFU-12-A1 RA-MPFU-12-B0 RA-MPFU-12-B1 RA-MPFU-12-B2 RA-MPFU-12-HS1
Forwarding Rate		2Mpps	7.5 to 30Mpps	7.5Mpps~60Mpps
Memory		4 GB	4 GB	4 GB
Flash		4 GB	4 GB	4 GB
Fixed Ports	GE	2 RJ45 + 2 SFP	0	0
	USB2.0	1 (support 3G/LTE dongle)	2 (support 3G/LTE dongle)	2 (support 3G/LTE dongle)
Flexible Ports	Ethernet	FE/GE	FE/GE/10GE	FE/GE/10GE
	POS	OC-3/STM-1 OC-12/STM-4	OC-3/STM-1 OC-12/STM-4	OC-3/STM-1 OC-12/STM-4
	CPOS	OC-3/STM-1	OC-3/STM-1	OC-3/STM-1
	xDSL	ADSL/ADSL2/ADSL2+/VDSL/ VDSL2 G.SHDSL	ADSL/ADSL2/ADSL2+/VDSL/ VDSL2 G.SHDSL	ADSL/ADSL2/ADSL2+/VDSL/ VDSL2 G.SHDSL
	TDM	E1/CE1/CES	E1/CE1/CES	E1/CE1/CES
	Serial port	V.35/ V.24	V.35/ V.24	V.35/ V.24
Power Redundancy		-	Support dual AC or DC, Hybrid AC and DC	Support 1+1, or AC and DC hybrid
Power Supply		100 ~240 VAC or -72 ~ -38 VDC		
Rated Power		60W	500W	500W
Chassis Height		1 RU	4 RU	6 RU
Dimensions (H x W x D, mm)		44 x 442 x 200	176 x 442 x 200	264 x 442 x 200 mm



ZXWL W981 Series Access Controller

Overview

The ZXWL W981 series, which is designed for government and business users, is strong in WLAN access control and user authentication. It features compact design, high reliability, and rich services. It also provides functions of plug and play, user control management, RF management, safety mechanism, and fast roaming. It can be widely used by governments, enterprises, hotels, and public hotspots.

Key Features

- Unified deployment & centralized management
- Intelligent wireless radio management
- Flexible data transfer method
- Safety reliable wireless access
- Built-in BRAS
- Simple & convenient operation management
- Smart AC with low noises
- Rack/Table installation

ZXWL W981s



- 16 GE Combo ports (8 PoE+)
- Up to 256 APs and 6400 clients

ZXWL W981



- 16 GE Combo + 2 10GE ports
- Up to 512 APs and 12800 clients

Specifications

Specifications	ZXWL W981s	ZXWL W981
GE Density	16 GE Combo (8 PoE+)	16 GE Combo
10 GE Density	-	2 10GE
Switching Capacity	32 Gbps	72 Gbps
Access Points (max.)	256	512
Clients (max. concurrency)	6400	12800
Dimensions (H x W x D, mm)	43.6 x 482.6 x 440	43.6 x 482.6 x 440
Unit Weight	6 kg	7 kg
Power Supply	100 ~ 240 VAC	100 ~ 240 VAC
Power Consumption (100% load with PoE, W)	< 350	< 150

Outdoor Access Point

Overview

ZXV10 W660A V2/W615 V3 (802.11n AP) support two spatial streams with wireless data rates up to 300 Mbps. They can be flexibly installed on walls or poles. Developed on the unified ZTE CSP software platform, they can be used as coordinated or stand-alone APs to provide stable and manageable operator-level WLAN.

Key Features

- 500 MW high RF power
- 2 x 2 MIMO 2 spatial streams
- W660A V2: 802.11b/g/n; W615 V3: 802.11a/b/g/n
- Data rate up to 300Mbps
- 10/100/1000Mbps Ethernet ports
- PoE power supply
- IP66 environmental protection
- Coordinated/Stand-alone AP mode (switched by software)

ZXV10 W660A V2



- 1 GE port, PoE
- 802.11b/g/n@2.4GHz
- Support IP 66

ZXV10 W615 V3



- 1 GE port, PoE
- 802.11a/b/g/n@2.4GHz & 5.8GHz
- Support IP 66
- Mesh/WDS function

Specifications

Specifications	ZXV10 W660A V2	ZXV10 W615 V3
Wireless Standards	802.11b/g/n	802.11a/b/g/n
Transmit Power (Max.)	500mW	2.4GHz: 500mW 5.8GHz: 250mW
Frequency Band	2.4-2.484 GHz	2.4-2.484 GHz 5.15-5.85 GHz
Antenna	2 N-type connectors (antennas sold separately)	4 N-type connectors (antennas sold separately)
Radio Chains	2X2 MIMO 2 spatial streams	2X2 MIMO 2 spatial streams
Network Interface	1 GE port, PoE	1 GE port, PoE
Power Supply	PoE, 802.3at	PoE, 802.3at
Power Consumption (W)	8.7	18.4
Dimensions (H x W x D, mm)	69 x 210 x 210	69 x 210 x 210
Unit Weight	3 kg	3 kg
Environmental rating	IP66	IP66
Operating Temperature	-40°C to 55°C	-40°C to 55°C
Humidity	0 to 100% non-condensing	0 to 100% non-condensing

Indoor Access Point

Overview

ZXV10 W811N series are single-band indoor APs with 2.4G. ZXV10 W812N V2 and W822E are dual-band indoor APs which support both 2.4G and 5G. W811N and W812N V2 support two spatial streams with wireless data rates up to 300 Mbps. They can be installed easily on walls or ceilings. W822E series support three spatial streams with wireless data rates up to 450 Mbps. Developed on the unified ZTE CSP software platform, they can easily be switched between coordinated or stand-alone AP mode to provide stable and manageable operator-level WLAN.

Key Features

- 100 MW high power
- 10/100/1000Mbps Ethernet
- PoE or adaptor power supply
- Coordinated/Stand-alone AP mode (switched by software)

ZXV10 W811N



- Up to 300bps
- 1 GE port, PoE
- 802.11b/g/n@2.4GHz
- 2 internal antennas

ZXV10 W812N V2



- Up to 300bps
- 1 GE port, PoE
- 802.11a/b/g/n@2.4GHz & 5GHz
- 4 SMA-type external antenna connectors
- Mesh/WDS function

ZXWL W822E



- Up to 450Mbps
- 2 GE port, PoE
- 802.11a/b/g/n@2.4GHz & 5GHz
- 6 SMA-type external antenna connectors or internal antennas for options
- Mesh/WDS function

Specifications

Specifications	ZXV10 W811N	ZXV10 W812N V2	ZXWL W822E
Wireless Standards	802.11b/g/n	802.11a/b/g/n	802.11a/b/g/n
Transmit Power (Max.)	100mW		
Frequency Band	2.4-2.484 GHz	2.4-2.484 GHz 5.15-5.85 GHz	2.4-2.484 GHz 5.15-5.85 GHz
Antenna	2 internal antennas	4 SMA-type connectors (antennas sold separately)	Two options: 6 internal antennas or 6 SMA-type connectors (antennas in package)
Radio Chains	2 x 2 MIMO 2 spatial streams	2 x 2 MIMO 2 spatial streams	3 x 3 MIMO 3 spatial streams
Network Interface	1 GE port, PoE	1 GE port, PoE	2 GE port, PoE
Power Supply Options	PoE, 802.3af/at 12 VDC (power adaptor)	PoE, 802.3af/at 12 VDC (power adaptor)	PoE, 802.3at 12 VDC (power adaptor)
Power Consumption (W)	7	10	12.5
Dimensions (H x W x D, mm)	49 x 180 x 180	45 x 165 x 188	45 x 188 x 188
Unit Weight	0.3 kg	0.8 kg	0.75 kg
Environmental Rating	IP30	IP31	IP41
Operating Temperature	-10°C to 55°C	-10°C to 55°C	-10°C to 45°C
Humidity	5 to 95% non-condensing	5 to 95% non-condensing	5 to 95% non-condensing

ZXWL WE2012 In Wall Access Point

Overview

ZXWL WE2012 is single-band indoor 802.11n AP with 2.4G. It can be easily installed on walls, thus saving the installation time. Developed on the unified ZTE CSP software platform, this AP can easily be switched between coordinated or stand-alone AP mode to provide a stable and manageable operator-level WLAN.

Key Features

- | | |
|---------------------------------|---|
| • Easy and fast installation | • 802.11b/g/n |
| • Controllable status indicator | • Data rates up to 300Mbps |
| • USB power output | • PoE power supply |
| • 50 MW RF output power | • Coordinated/Stand-alone AP mode (switched by software) |
| • 2X2 MIMO | |

ZXWL WE2012



- Up to 300bps
- WAN: 1 FE PoE port, LAN: 2 FE ports
- 2 POTS interfaces, 1 USB interface
- 802.11b/g/n@2.4GHz
- 2 internal antennas, 50mW transmit power

W822U Indoor Access Point

Overview

The W822U is a dual-band indoor Access Point (AP) with 2.4G band for wireless coverage and 5G band for wireless coverage or wireless bridging. This high-performance 802.11n AP features 3 spatial steams, delivers wireless data rates of up to 450 Mbps at 2.4G and 1.3Gbps at 5G, and can be flexibly mounted on a wall or a ceiling. Developed under the unified ZTE CSP software platform, the W822U can easily switch between the coordinated and stand-alone AP modes, providing a stable and manageable carrier-grade WLAN.

Key Features

- | | |
|-------------------------------|--|
| • 2.4G/5G Dual Bands | • 10/100/1000Mbps Ethernet |
| • 100mW High Power | • 48V DC PoE Power Supply |
| • 3x3 MIMO 3 Spatial Streams | • IP41 Protection Level |
| • 802.11a/b/g/n up to 450Mbps | • Software switchable between Coordinated and Stand-alone mode |
| • 802.11ac up to 1.3Gbp | |

WE2012



WE8022 Dual-bands Indoor AP

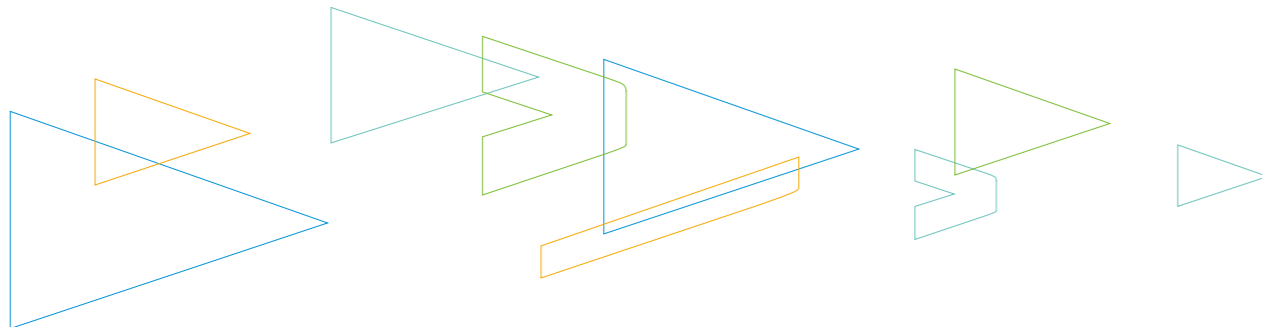
Overview

The WE8022 is a dual-bands indoor AP with 2.4G for coverage and 5G for wireless bridge. It supports 802.11n and max 2 spatial streams which reaches 300Mbps PHY speed and can be flexibly mounted on walls, roofs. Developed under the unified ZTE CSP software platform, it can easily switch and operate as a FIT or FAT AP and provide stable and manageable carrier-grade WLAN.

Key Features

- | | |
|-------------------------------|---|
| • 2.4G/5G Dual Bands | • 10/100/1000Mbps Ethernet |
| • 100mW High Power | • 48V DC PoE Power Supply |
| • 2X2 MIMO 2 Spatial Streams | • Coordinated/Stand-alone AP mode software switchable |
| • 802.11a/b/g/n up to 300Mbps | |

WE2012



Optical Line Terminal

Overview

The ZXA10 C300/C320 Full Service Access Platform allows operators to offer end users with multiple broadband services. It features high security and low TCO and provides various services, such as HSI, VoIP, TDM, IPTV, and mobile backhaul to users.

Key Features

- Unified platform for EPON, GPON, P2P, 10G-EPON, XG-PON1 and TWDM-PON
- Flexible networking for FTTH, FTTO, FTdp,FTTB, FTTV, and mobile backhaul,etc.
- Excellent capability with large backplane bandwidth, high-density service cards, and non-blocking switching service
- High reliability ensured by board redundancy and the hot swappable function
- Perfect clock synchronization with BITS, 1PPS+ToD, IEEE 1588V2 and synchronous
- Powerful QoS control based on service provider, user and service
- Powerful TDM capability with bearing of STM-4, STM-1, E1 and T1
- Eco-friendly design which complies with the Europe CoC and RoHS standards

ZXA10 C300



- 10RU high, up to 16 Service Card slots
- Supports type B/C protection
- DC power

ZXA10 C320



- 2RU high compact design, 2 Service Card slots
- Supports type B/C protection

Specifications

Specifications	ZXA10 C300	ZXA10 C320
Service Slots	IEC 19" shelf: 14 ETSI 21" shelf: 16	2
Uplink	40GE/10GE/GE/FE/E1/T1/STM-1/STM-4	10GE/GE/FE
User Ports	GPON/EPON /P2P/10G-EPON/XG-PON1	GPON/EPON/P2P/10G-EPON/XG-PON1
Dimensions (H x W x D, mm)	IEC 19" shelf: 443.7 x 482.6 x 270 ETSI 21" shelf: 449.2 x 535 x 270	86.1 x 482.6 x 270
Power Supply	-48 VDC	-48V/-60 VDC or 110/220 VAC

Optical Network Unit

Overview

ZTE ONU products are used to provide optical access. They help operators to build broadband optical access platforms for full-service operation. They build up home or business network and provide individualized, convenient, comfortable, safe and effective services.

ZTE ONU series have various models meeting requirements of different FTTx scenarios, and provide end users with multiple services, such as data, and voice and CATV.

Key Features

- Various user interfaces, such as GE/FE port, FXS port, RF port, E1/T1, and USB port
- Superior Wireless 802.11n transmission performance
- Zero touch management to lower OPEX
- Green design to save energy and RoHS compliant

ZXHN F600



- Compact ONU for data service
- WAN: 1 GPON port
- LAN: 4 GE ports

ZXHN F601



- Smart ONU for optical access
- WAN: 1 GPON port
- LAN: 1 GE port

ZXHN F620



- Compact ONU for data and voice services
- WAN: 1 GPON port
- LAN: 4 GE ports
- 2 FXS ports

ZXHN F660



- Powerful GPON gateway for multi-play service
- WAN: 1 GPON port
- LAN: 4 GE ports, 802.11b/g/n@2.4GHz
- 2 FXS ports, 1 USB 2.0 interfaces

ZXHN F668



- ALL-in-one GPON gateway for multi-play services
- WAN: 1 GPON port
- LAN: 4 GE ports, 802.11b/g/n@2.4GHz
- 2 FXS ports, 1 RF F-Type connector, 1 USB 2.0 interface

ZXA10 F822



- Fixed configuration GPON MDU for FTTB/FTTO
- WLAN: 1 or 2 GPON ports, support uplink protection
- User ports: fixed user ports, multi-options for choice, support FE/POTS

ZXA10 F821



- Modular GPON MDU for FTTB/FTTO
- WAN: 1 or 2 GPON ports, support uplink protection
- User ports: 3 plug-in slots for flexible user ports, support GE/FE/POTS/E1/T1

Specifications

SPECIFICATIONS	ZXHN F600	ZXHN F601	ZXHN F620	ZXHN F660	ZXHN F668
WAN Ports	GPON	GPON	GPON	GPON	GPON
LAN Ports	4 GE	1 GE	4 GE	4 GE	4 GE
WiFi	No			802.11b/g/n@2.4GHz (2 x 2)	
RF Connector	0				1
FXS	0		2	2	2
USB 2.0	0			1	1
Power Supply	12 VDC (Power adapter)				
Dimensions(H x W x D, mm)	35 x 199 x 150	28 x 110 x 90	35 x 199 x 150	35 x 199 x 150	40 x 220 x 180
Net Weight	348 g	114 g	361 g	380 g	580 g

Features	ZXA10 F821	ZXA10 F822
Line Card Slots	3	-
Uplink	1 or 2 GPON	
User Ports	GE/FE/POTS/E1/T1	FE/POTS
Power Supply	85 ~286 VAC or -40 ~ -57 VDC	85 ~ 286 VAC
Dimensions (H x W x D)	43.6 x 482.6 x 255	43.6 x 482.6 x 240
Net Weight (Kg)	< 4.5	< 4.5

Powerline Communications Adapter

Overview

ZTE is dedicated to bringing faster and easier home network for end users and operators. Designed under the standards of HomePlug AV2/AV and IEEE 1901, the H51xx and H 52XX series PLC home networking products can reach high data rates from 200Mbps up to 1800M Mbps. The series PLC home networking products from ZTE are powerful enough to transmit full HD video streams to every rooms in the home, simple over the electrical wiring without routing cables or worrying about wireless signal strength/noise.

Key Feature

Flexible Networking

- No new wires needed and capex saving for customer for home networking
- PLC complies HomePlug AV2/AV, IEEE 1901
- Neighbor Network Isolation
- Supports IGMP managed multicast sessions

Best-in-class Performance

- Up to 1800M bps data rate
- Optimized PSD to maximize performance
- Optimized PSD to maximize performance
- Automatic sleep mode to save power consumption
- Low Power Mode Complies CoC

User Friendly Experience

- Plug & Play without configuration for easy installation
- Dedicated led designing for data rate and diagnosis
- One-Press pairing network to join or leave network
- Pass through type with built-in filter saves power socket cost for better customer experience
- Small size for easy placement

Perfect QoS Support

- Priority-based CSMA/CA channel access schemes maximize efficiency and throughput.
- QoS to guarantee delivery of videotraffic
- Class priority based on VLAN/TOS field and IP address/Port

Key features

- No new wires needed and Capex saving for home networking
- PLC complies HomePlug AV2/AV, IEEE 1901
- Plug & Play without configuration for easy installation
- Small size for easy placement
- Neighbor Network Isolation
- Supports IGMP managed multicast sessions
- Low Power Mode Complies CoC
- Priority-based CSMA/CA channel access schemes maximize efficiency and throughput.
- QoS to guarantee delivery of video traffic

ZXHN H511A



- PLC Adapter-wallmount
- Homeplug AV 200M
- Provides one 10/100M ports
- Certificate: CE

ZXHN H511B



- PLC Adapter-wallmount
- IEEE1901 500M
- Provides one 10/100M ports
- Certificate: CE

ZXHN H512A



- PLC Adapter-Passthrough
- Homeplug AV 200M
- Provides one 10/100M ports
- Certificate: CE

ZXHN H512B



- PLC Adapter-Passthrough
- IEEE1901 500M
- Provides one 10/100M ports
- Certificate: CE

ZXHN H513B



- Complies with IEEE 1901
- Wired speed up to 500Mbps
- 2 FE ports
- 802.11b/g/n@300Mbps

ZXHN H513E



- Complies with HomePlug AV
- Wired speed up to 200Mbps
- 2 FE ports
- 802.11b/g/n@150Mbps

ZXHN H513R



- PLC Adapter -Wi-Fi Hybrid
- Homeplug AV 200M
- Provides two 10/100M ports
- PPPoE/DHCP/Static IP
- 802.11n 1x1 150M

ZXHN H522D



- PLC Adapter -Passthrough
- Homeplug AV2 1200M
- Provides two 10/100M /1000 ports
- Tr069

Specifications

Specification:	H511A	H511B	H512A	H512B
PLC Standard	Homeplug AV	IEEE1901	Homeplug AV	IEEE1901
PLC Data Rate	200M	500M	200M	500M
Type	Wallmount	Wallmount	Passthrough	Passthrough
Wireless Datarate	None	None	None	None
LAN Interface	1xFE	1xFE	1xFE	1xFE
Dimensions(HxWxD)	69 (L) x 60 (W) x 29 (H)	69 (L) x 60 (W) x 29 (H)	116 (L) x 60 (W) x 41 (H) mm	116 (L) x 60 (W) x 41 (H) mm
Net Weight	80g	80g	180g	180g
Power consumption	<2.5W	<2.7W	<3W:	<3W:

Specification:	H513B	H513E	H513R	H522D
PLC Standard	IEEE1901	Homeplug AV	Homeplug AV	Homeplug AV 2
PLC Data Rate	500M	200M	200M	1200M
Type	Wi-Fi hybrid	Wi-Fi hybrid	Wi-Fi hybrid	passthrough
Wireless Datarate	802.11n 2.4G 300M	802.11n 2.4G 150M	802.11n 2.4G 150M	None
LAN Interface	2xFE	2xFE	2xFE	1xGE
Dimensions(HxWxD)	107 (L) x 62 (W) x 48.5 (H) mm	70(L) x 60(W) x 55.2(H) mm	70(L) x 60(W) x 55.2(H) mm	120 (L) x 60 (W) x 38(H)
Net Weight	180g	100g	100g	195g
Power consumption	<6.5W	<4W	<4W	<4W

Wireless Router

Overview

The wireless-N router designed for residential users offers wireless access at home. It offers four FE or GE interfaces for more devices to connect onto the network, and high wireless data rate for smooth Internet surfing experiences.

Key Features

- Up to 300Mbps with MIMO and channel bonding technology
- 5dbi external dual antennas to enhance through-wall capability
- Cool Appearance with Steady Style
- One press button to enter guidance for quick and easy network setup
- One press WPS to easily set up a safe wireless connection with WPA and WPA2 encryption
- Intelligent Bandwidth Management
- SSID broadcast control to prevent network freeloading
- Parental Control

ZXHN E5501



- Wireless Speed up to 300Mbps
- WAN:1 FE
- LAN: 4 FE
- 802.11b/g/n@2.4GHz (2 x 2)

ZXHN E5502



- Wireless Speed up to 300Mbps
- WAN:1 FE
- LAN: 4 FE
- 802.11b/g/n@2.4G (2 x 2)

ZXHN H560N



- Wireless Speed up to 300Mbps
- WAN:1 10/100M FE
- 802.11b/g/n@ 2.4G (2 x 2)
- 1 USB 2.0

ZXHN E8810



- 600M wireless router
- WAN:1x10/100M FE
- LAN:4x10/100M FE
- 802.11b/g/n Wi-Fi @ 2.4G(2x2)
- 802.11a/n/ac Wi-Fi @5G(1x1)

Z1



- 1750M dual banf wireless router
- WAN: 1x10/100/1000M GE
- LAN:2x10/100/1000M GE
- 802.11b/g/n Wi-Fi @ 2.4G(3x3)
- 802.11a/n/ac Wi-Fi @5G(3x3)
- 1xUSB 3.0 Host

Specifications

specifications \ Models		E5501	E5502	E8810	Z1	H560N
Ports	WAN	FE	FE	FE	GE	FE
	LAN	41x10/100M	4x10/100M	4x10/100M	2x10/100M/1000M	802.11n(2x2)
		802.11n(2x2) 2.4G	802.11n(2x2) 2.4G	802.11n(2x2) 2.4G	802.11n(3x3) 2.4G &5G	1xUSB 2.0
		-	-	802.11a/n/ac(1x1) 5G	802.11a/n/ac Wi-Fi @5G(3x3)	-
		-	-	1xUSB 2.0	1xUSB 3.0	-
Physical	Dimensions (HxWxD)	175 (L) x 135 (W) x 37 (H) mm	175 (L) x 135 (W) x 37 (H) mm	164 (L) x 113 (W) x 27 (H) mm	108x52x105mm	93 (L) x 56 (W) x 29 (H) mm
	Net Weight	262g	220g	250g	442g	100g
Power	Power supply	5VDC ,1A	5VDC ,1A	12V DC 1A	12V DC, 1.5 A	220V AC ,0.5A
	Power consumption	<1.5 W	<2.11W	<9W	<14W	<4W

Zandra™ ZTE home security system

Overview

Zandra™ is ZTE home security system for home user to provide total protection for your home and keeps you peace of mind when you are away from home. Zandra™ home security system includes series IP camera and sensors to build up a secure home, you can easily view your family members, pets, and children anytime anywhere from your smart phone. Alerted alarms will be immediately sent to you by SMS message, text message and phone calls if urgent situations happened.

Key Features

- Unified system for easily extending to new home value-added services
- Professional and total solution for your home protection
- End to end data security without privacy concern
- Easy setup even without configuration
- Up to 1080P IP camera and Pan&Tilt function allow you watch more details
- Easy APP portal for you anywhere any time view and control your home

C520



- 720P HD video with H.264 codec
- 1.0 MP CMOS
- 1/4" Image Sensor
- F 2.2 Aperture
- 60° lens angle and 290° rotation
- Infrared(IR) Night Vision
- 0 Lux night vision (up to 10 Meters)
- 802.11n Wi-Fi and Fast Ethernet
- Micro SD for local recording and cloud recording
- Motion detection and triggering

C520P



- 1080P HD video with H.264 codec
- 2.0 MP CMOS
- 1/2.7" Image Sensor
- F 2.2 Aperture
- 4x Digital zoom
- 95° lens angle and 290° rotation
- Infrared(IR) Night Vision
- 0 Lux night vision (up to 10 Meters)
- 802.11n Wi-Fi and Fast Ethernet
- Micro SD for local recording and cloud recording
- Motion detection and triggering

C520P



- Easy install
- RF315/433/868/915MHz
- Home & Away mode
- On/off security system
- Master PIN input
- Screen display status

Keychain Remote

- RF315/433/868/915MHz
- LED working status indicator
- 150m Wireless distance
- LED working status indicator
- No need wiring

Entry sensor

- RF315/433/868/915MHz
- Easy install
- 200m Wireless distance
- Compacted design

Motion Sensor

- RF315/433/868/915MHz
- 100m Wireless distance
- Built-in Visual/sound alarm
- No need wiring
- Wall Mount

Water Detector

- RF315/433/868/915MHz
- Stop damage from leaks & floods
- Deployed at the major plumbing or in the attic to detect water leaks
- Double detect probe with high sensitivity
- Built-in button batteries to supply power more than 2 years

Gas Detector

- Detect gas leaks when you are in sleep
- Electrochemical detection chip
- 220V power supply
- 433MHz RF
- Accurate detection and analysis of smoke particles to trigger alarm

Smoke Detector

- RF315/433/868/915MHz
- Photoelectric infrared LED
- Ceiling Mounting
- Not emit radioactive element
- Auto send status signal
- Auto send low power alarm
- Auto send resetting signal
- 150m Wireless distance

Environment Senso

- Detect real-time temperature and humidity to provide the comfortable life environment
- Push the button to show the message at the key pad and remote controller
- 2*AA Battery for power supply more than 2 years
- 433MHz RF

Panic Butto

- RF315/433/868/915MHz
- Panic mode
- Home & Away mode
- Off /On security system
- 150m Wireless distance
- Novel appearance, convenient to take

ET701 Smart high Definition Video Conferencing Terminal**Overview**

ET701 is a new generation high definition video conferencing system with an integrated wide angle PTZ camera developed by ZTE. The ET701 is easy to deploy in any working environment to create a more natural meeting experience. Delivering pin sharp dual 1080p60 HD video resolution and crystal clear high fidelity audio. The most important thing is that the ET701 is built-in intelligent OS and provides more conferencing applications. It is the first smart videoconferencing terminal in the world. It is your ideal videoconferencing assistant that brings you a brand new remote conferencing experience.

Key Features

- Wi-Fi support: easy network access
- Built-in electronic whiteboard function
- Built-in Office reader application
- Built-in web browser
- Directly communicate with Skype by voice

ET701

- ITU-T H.323
- IETF SIP
- H.263, H.264, H.264HP
- 1080p, 720p, w576p, 4CIF, w448p, w288p, CIF

ET501 Smart high Definition Video Conferencing Terminal**Overview**

ZTE ET501 is a smart high definition video conferencing terminal with an integrated wide angle PTZ camera but with very small size. The ET501 is easy to deploy in any office and small meeting room to create a more natural meeting experience. It supports 720p30 high definition video resolution and can provide more applications which are very necessary in the meeting.

Key Features

- Wi-Fi support: easy network access
- Built-in electronic whiteboard function
- Built-in Office reader application
- Built-in web browser
- Directly communicate with Skype by voice

ET501

- ITU-T H.323
- IETF SIP
- H.263, H.264, H.264HP
- 720p, w576p, 4CIF, w448p, w288p, CIF



Sharing with you

